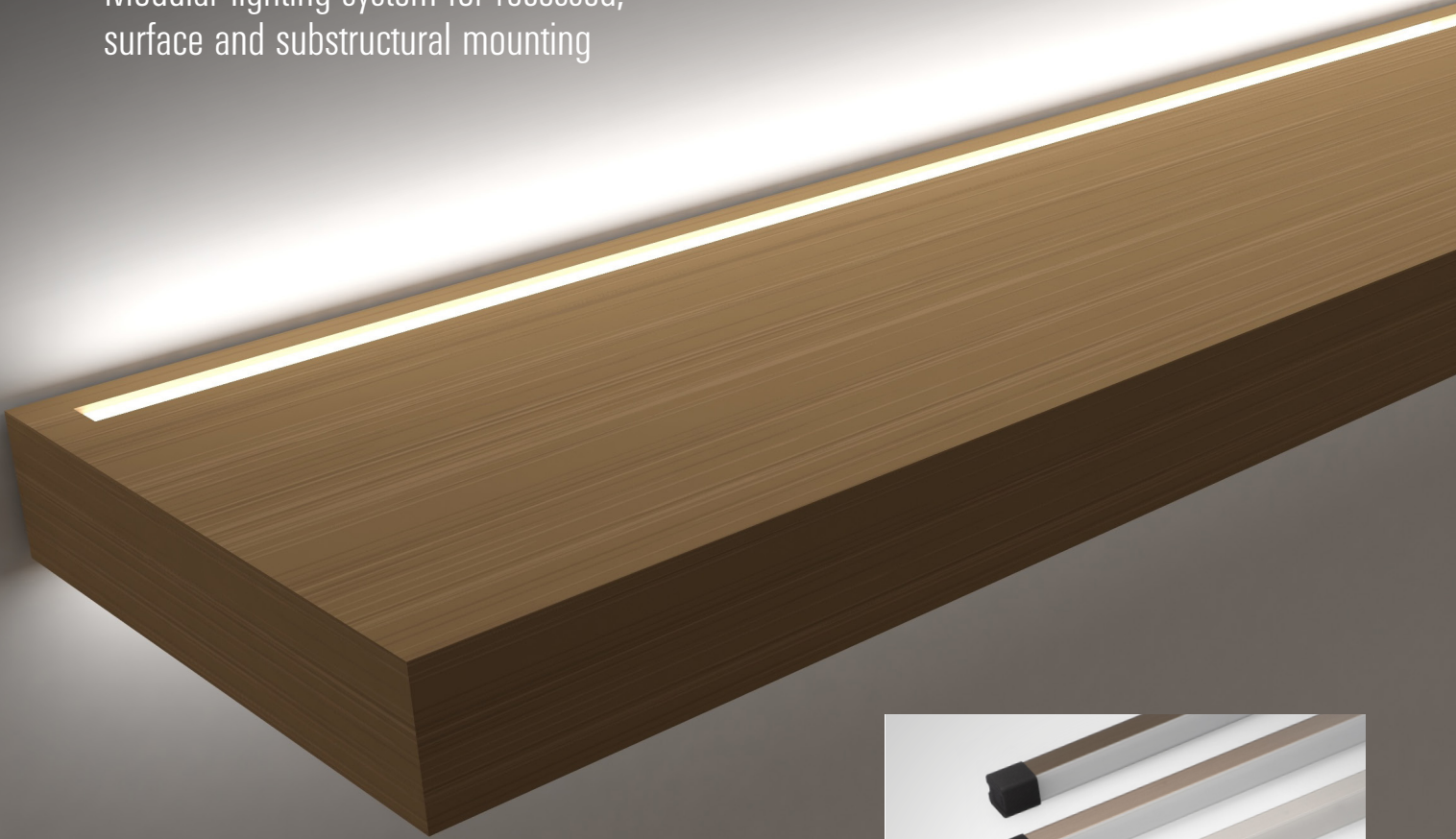


PRODUCT INFORMATION



ACR PROLINE

Modular lighting system for recessed,
surface and substructural mounting



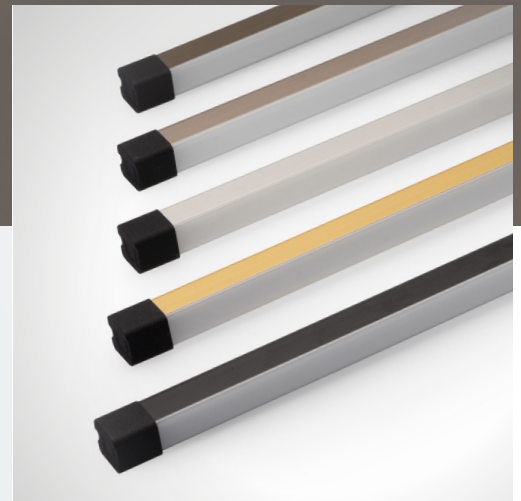
TECHNICAL DATA

Modular: length adapts to your product

Homogeneous: no hotspots

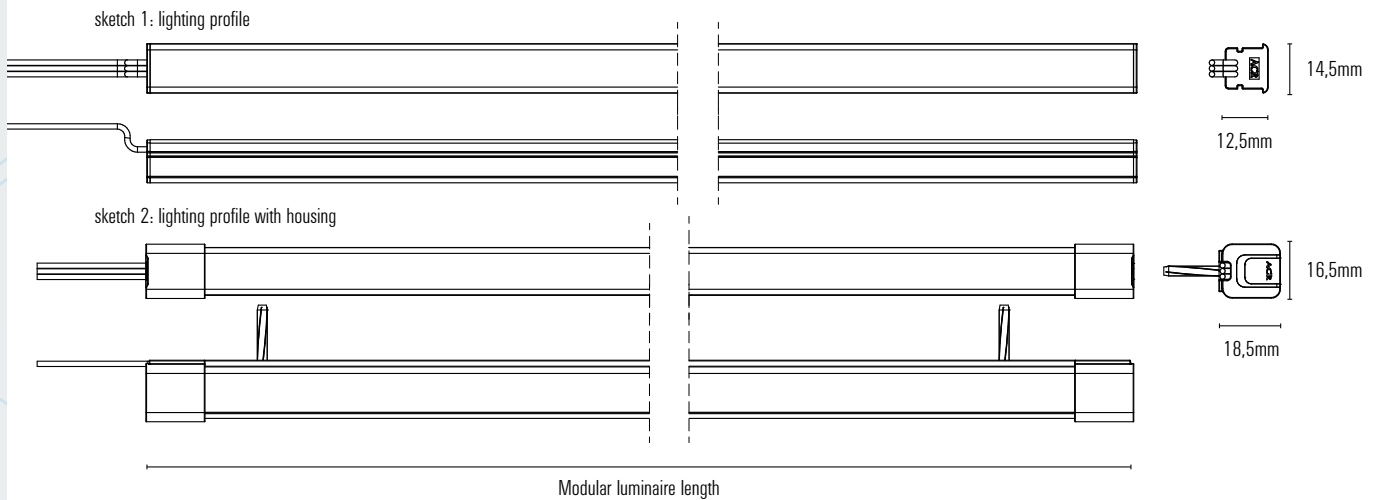
Modular system: suitable for various mounting situations

- Versatile applications: showcase lighting, shop fitting, furniture and machine luminaire, ambient lighting, etc.
- Various light colours and spectra
- Service life acc. to IEC62722 - L70B50 > 60.000 h
- Dimmable +24 VDC
- Temperature: -10 to +60°C
- Luminaire with standard plug-in system and connector or open-end cable



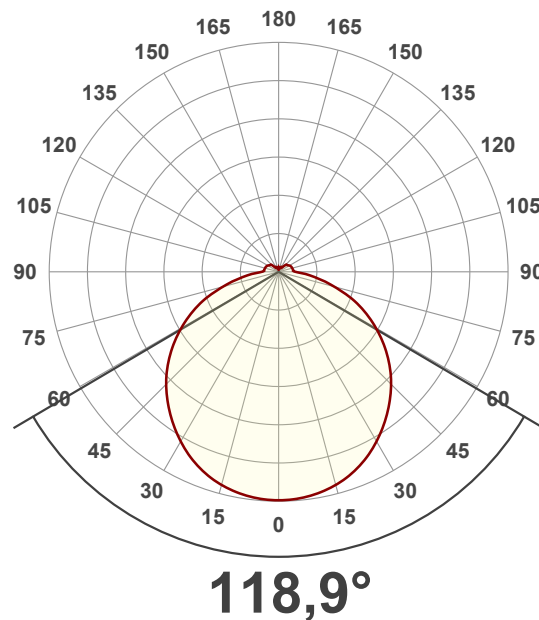
THIS LED LUMINAIRE IS MADE IN AUSTRIA.

DIAGRAM OF ACR PROLINE:



BEAM ANGLE:

Characteristic value that determines the light exit angle of the light source.



ILLUMINANCE:

Light intensity / brightness on surface depending on installation height*

installation height [mm]	light colour [K]	illuminance [lx]
250	2700	1.999
	4000	2.294
500	2700	929
	4000	1.044
750	2700	650
	4000	714

*Length of tested lights: 680mm / Installed in white measurement box (1m²)

